

20,000 lbs. x 48" wide x .048" Thick "Panther" Cut-To-Length Line

GENERAL SPECIFICATIONS:

Coil weight:.....	20,000 lbs. maximum
Coil width:.....	24" - 48"
Coil O.D.:.....	60" maximum
Material type:.....	Electro-Galvanized Mild Steel (50KPSI Yield)
Material thickness:.....	.027" - .048"
Length accuracy:.....	± .030"
Line speed:.....	150-fpm maximum roll speed
Shear cuts:.....	25 cuts maximum (@ 18" feed length)
Slit cut capacity:.....	6 cuts of .048"
Mode of operation:.....	Single edge operation Feed-to-stop
Electricals:.....	480v/3ph/60hz

EQUIPMENT SPECIFICATIONS:

ITEM #1. Single Mandrel Uncoiler

- A. Maximum coil weight capacity: 20,000 lbs.
- B. Maximum coil width capacity: 48"
- C. Maximum coil O.D.: 60"
- D. 15½" to 20½" manual three arm mandrel expansion range
- E. Heavy steel cover leaves with tapered nose for easy coil loading
- F. Wedge type expansion provides coil stability
- G. Heavy duty welded steel construction
- H. Hydraulic powered payoff drive with dancer arm control

ITEM #2. Hydraulic Side Mast Type Coil Car

- A. Maximum coil weight: 20,000 lbs.
- B. Maximum coil width: 48"
- C. 0-24" full load vertical coil lift capacity allows the removal of partially run coils and requires no foundation trench
- D. Vertical lift through hydraulic cylinder action with safety check valve
- E. Heavy duty welded steel construction
- F. Electrical push-button controls operate vertical lift and horizontal travel
- G. Hydraulic drive provides horizontal travel
- H. Two (2) flanged wheels and two (2) flat wheels for accurate tracking
- I. Hydraulic power supplied from uncoiler hydraulic unit
- J. Requires 40# rail mounted flush in the floor (installed by customer)

ITEM #3. Adjustable Entry Guide

- A. Maximum material width: 48"
- B. Four (4) sided hardened plate type entry guides
- C. One side is fixed with the other side being adjusted through handwheel
- D. Entry catenary section for material loop support
- E. Entry guide and catenary roll out of the way to set up the slitter

ITEM #4. Quickset Slitter

- A. 4" diameter arbors X 48" wide
- B. Arbors mounted in heavy duty tapered roller bearings
- C. Driven through common drive with straightener
- D. Adjustable outboard squaring guide - manual adjustment
- E. 5 sets 46SK D-2 material slitter knives
- F. 5 sets 46RS rubber stripper rings

ITEM #5. Straightener

- A. Maximum strip width capacity: 48"
- B. Material thickness capacity: .048"
- C. 30 HP variable speed AC vector drive geared for 75 maximum roll speed
- D. 5 work rolls (2 over 3) - 3" diameter hardened and ground work
- E. Powered 4" diameter air-loaded entry pinch rolls
- F. All work rolls and pinch rolls are chain driven
- G. Centralized manual grease points provided for work roll and pinch roll bearing lubrication
- H. End housings and bearing blocks to be heavy duty machined steel
- I. Heavy duty welded structural steel framework
- J. Top work roll head vertical and bank adjustable via (4) anti-backlash screw jacks
- K. Automatic non-contact loop control automatically controls speeds of material through straightener

ITEM #6. Electronic Digital Length Control Measuring System

- A. Programmable controller with built-in batch counter and rate multiplier
- B. Main operator control console
- C. Heavy duty encoder mount

ITEM #7. Hydraulic Cut-Off

- A. Maximum strip width capacity: 48"
- B. Material thickness capacity: .048"
- C. Cuts per minute: 25 maximum
- D. Stroke per minute: 60 maximum
- E. Hydraulic actuated cut-off die complete with (4) sided D2 HC-HC cut-off blades

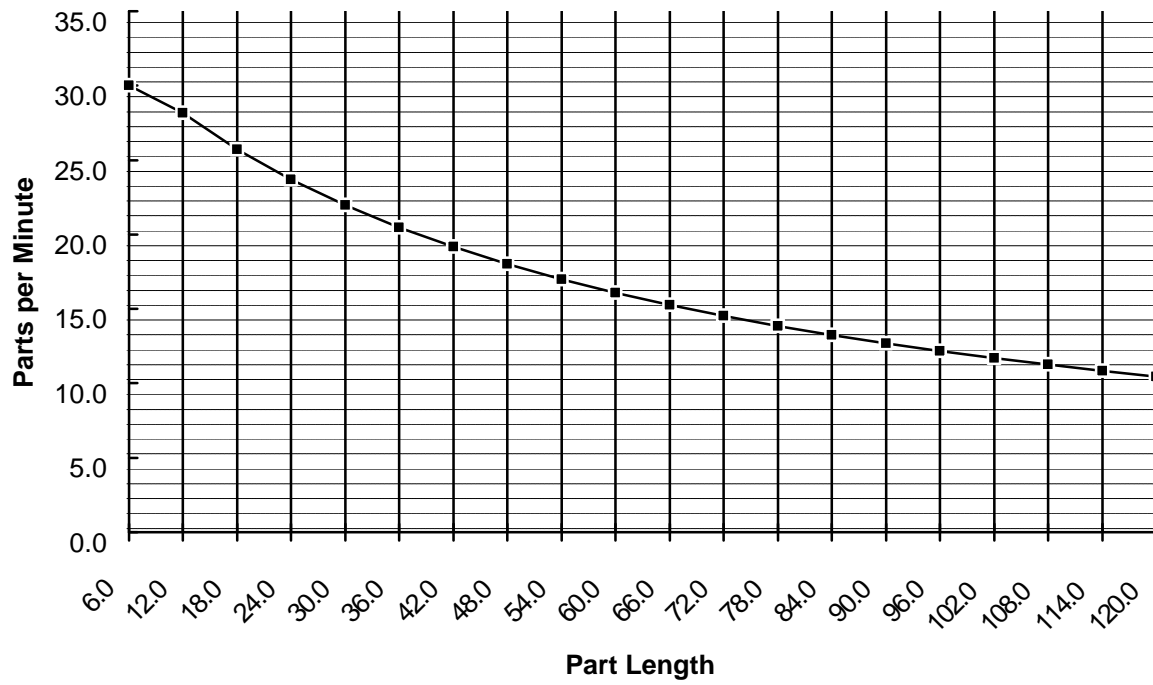
ITEM #8. Transfer Belt Conveyor

- A. Maximum sheet width: 48"
- B. Transfers sheets or strips from shear
- C. Full width endless type belt
- D. Quick and simple belt alignment adjustment
- E. 2" diameter conveyor drums
- F. 48" long bed section allow lift table to fit under conveyor for easy operator stacking
- G. Variable speed drive
- H. Heavy duty welded structural steel frame

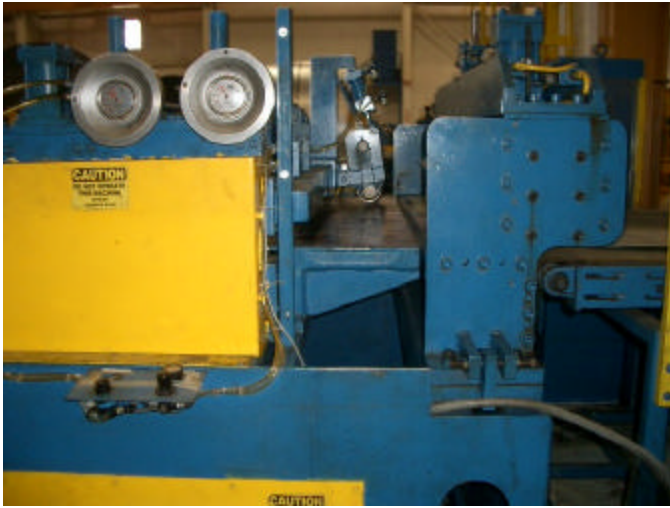
ITEM #9. Hydraulic Powered Lift Table

- A. Maximum bundle weight: 2,500 lbs.
- B. Maximum width capacity: 48"
- C. Maximum length capacity: 48"
- D. Self-contained hydraulic pumping unit
- E. Heavy duty design
- F. Powered roller type conveyor to be mounted on lift table deck for end discharge of stacked material
- G. Lift table to be mounted on casters and on steel track and is manually moved in and out from under conveyor for stacking of material

Calculated Production Rate

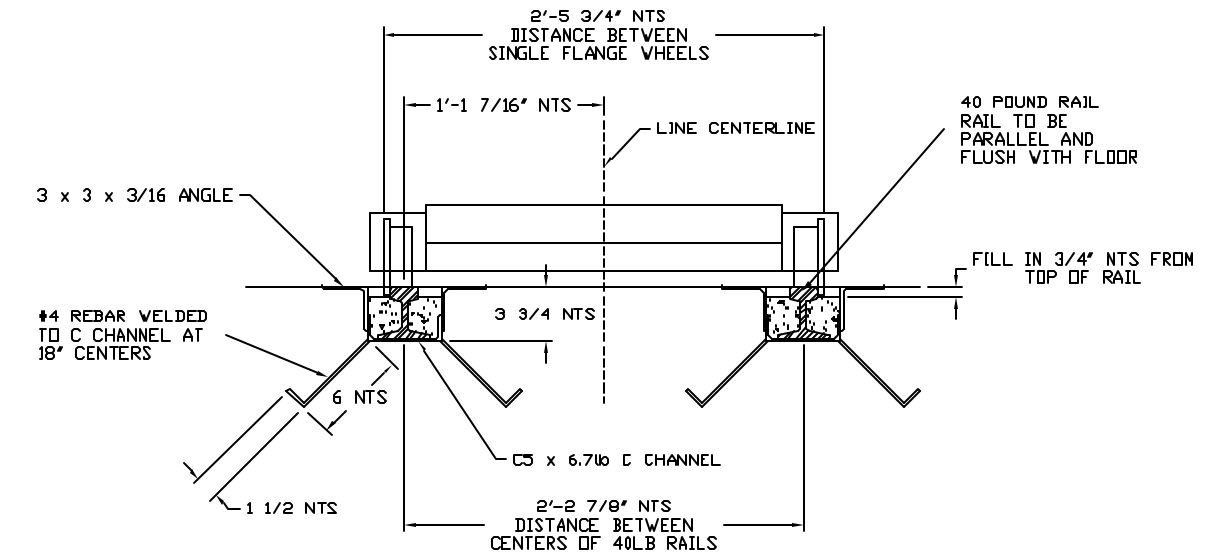
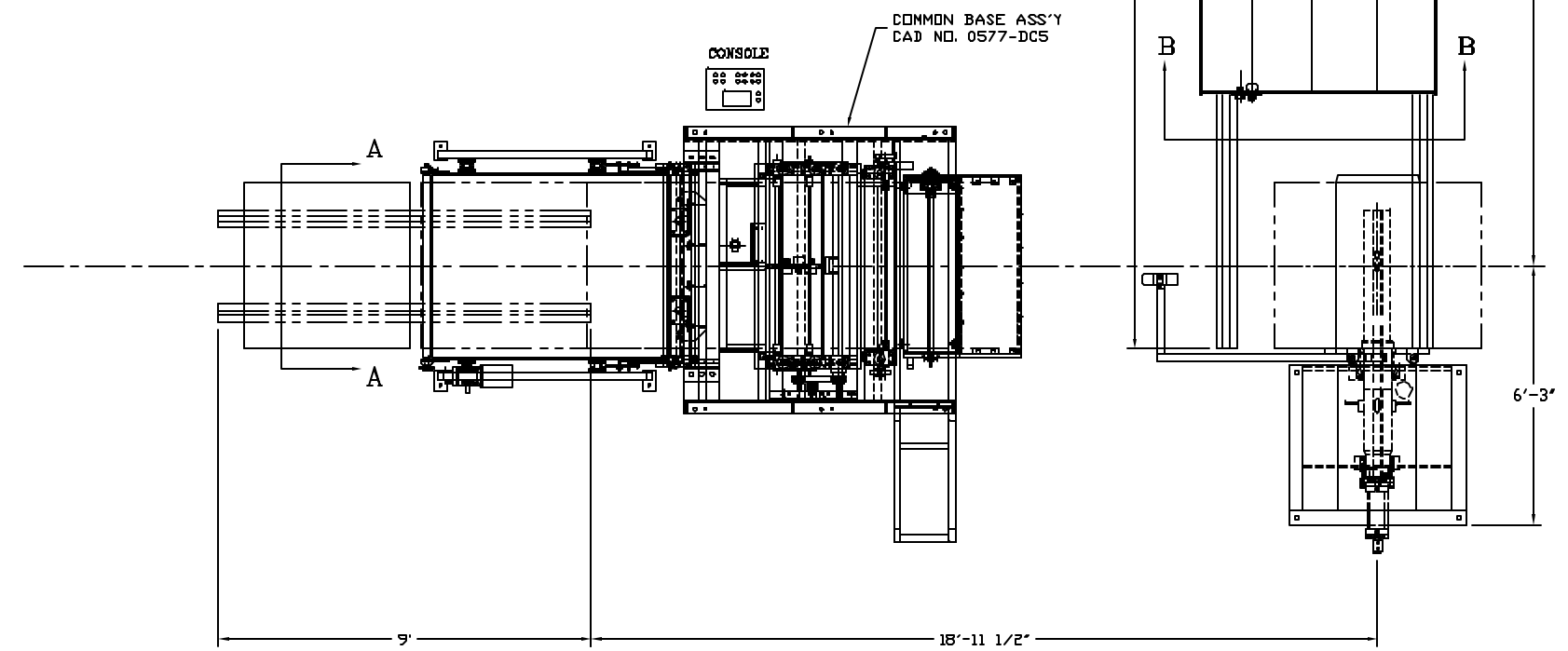




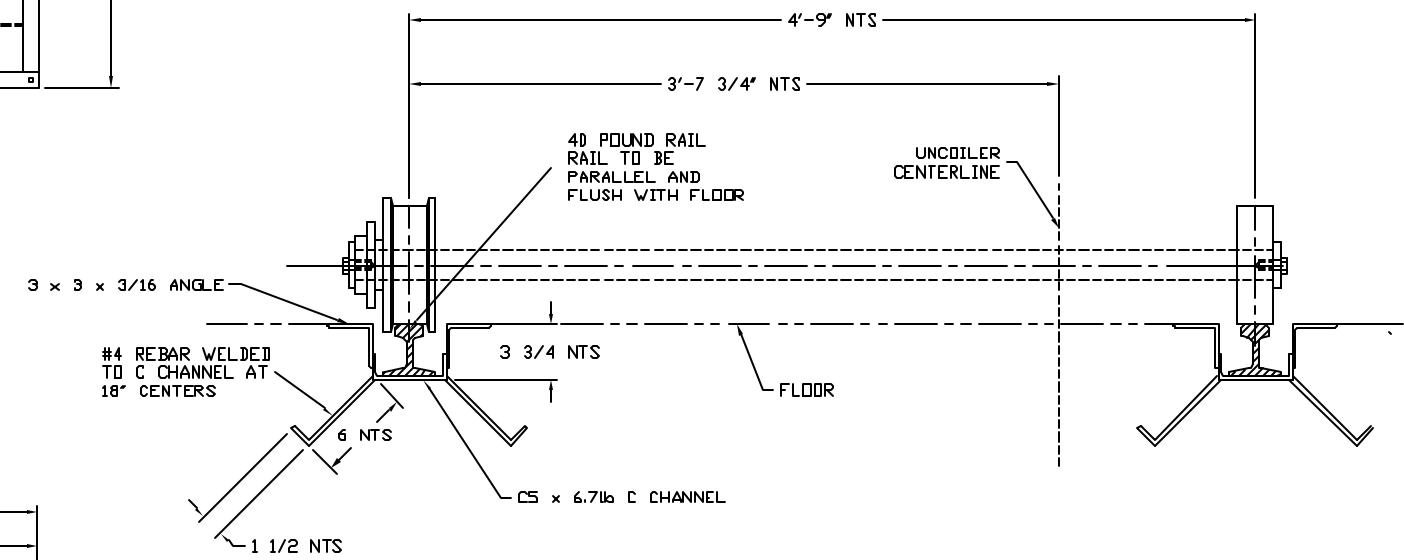


THIS DRAWING IS PROPERTY OF AND CONTAINS CONFIDENTIAL INFORMATION PROPRIETARY TO STRILICH TECHNOLOGIES. IT IS TO BE USED ONLY FOR THE PURPOSE FOR WHICH IT WAS PROVIDED. IT IS NOT TO BE COPIED OR DISCLOSED TO OTHERS AND UPON REQUEST RETURNED TO STRILICH TECHNOLOGIES.

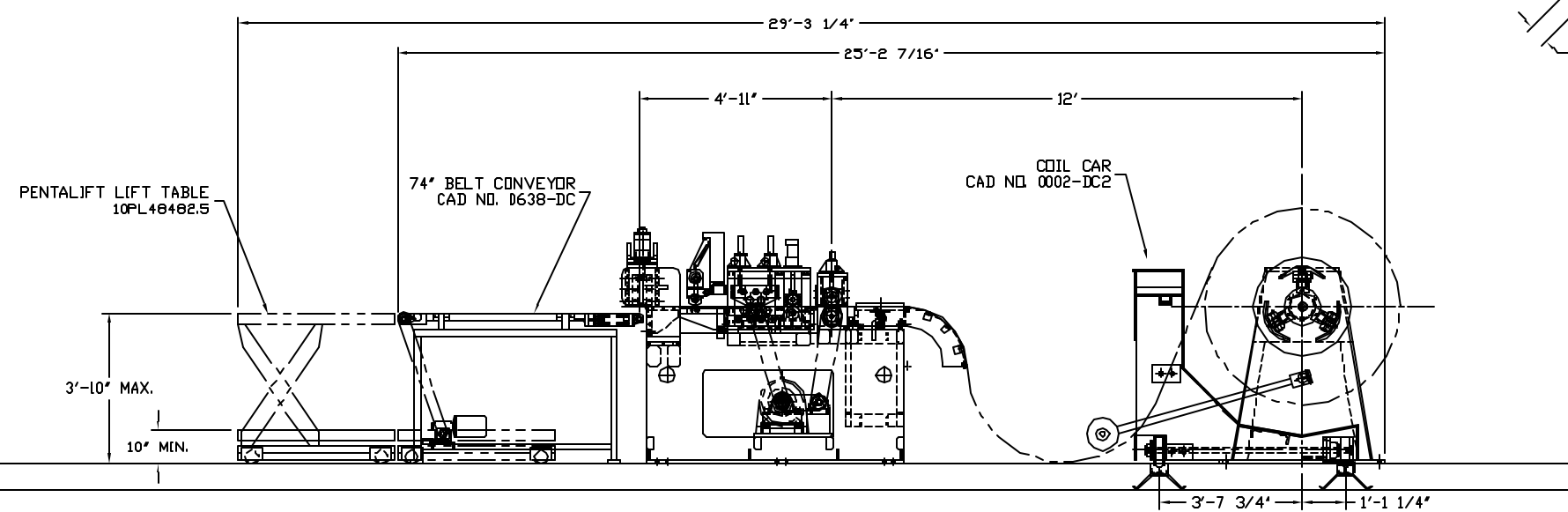
THIS DRAWING IS PROVIDED FOR CONCEPTUAL PURPOSES. DIMENSIONS AND DETAILS HAVE BEEN ESTIMATED TO A REASONABLE EXTENT. THIS DRAWING IS SUBJECT TO CHANGE UPON FURTHER ENGINEERING EVALUATION.



SECTION VIEW A-A
LIFT TABLE RECOMMENDED TRACK
TRACK LENGTH OF 9' IS MINIMUM
ENLARGED SCALE 1" = 6"



SECTION VIEW B-B
COIL CAR RECOMMENDED TRACK
TRACK LENGTH OF 18' IS MINIMUM
ENLARGED SCALE 1" = 6"



STRILICH TECHNOLOGIES, INC.			
A MEMBER OF THE BRADBURY GROUP			
DATE	7-7-08	DESIGNED	PROJECT NO.
SCALE	1/2" = 1"	CHECKED	
APPROVED			
PD BOX 210 1011 E. BENNETT STREET CROWN POINT, IN 46007		20K x 48" W x 18 ga. "PANTER" CTLL	
14970001		1 of 1	